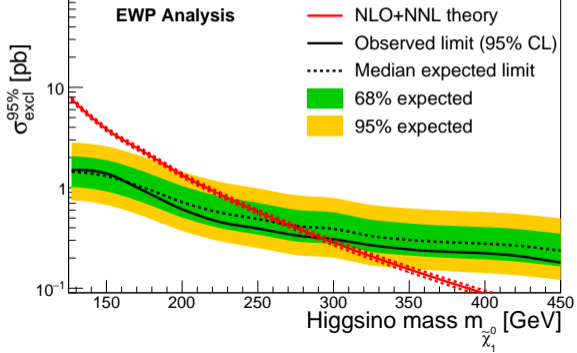


**CMS Preliminary**  $77.5 \text{ fb}^{-1}$  (13 TeV)

$$pp \rightarrow \tilde{\chi}_i^{0,\pm} \tilde{\chi}_j^{0,\pm} \rightarrow \tilde{\chi}_1^0 \tilde{\chi}_1^0 + X_{\text{soft}}; \tilde{\chi}_1^0 \rightarrow H \tilde{G} \text{ (100\%)}$$

$$m_{\tilde{\chi}_2^0} \approx m_{\tilde{\chi}_1^\pm} \approx m_{\tilde{\chi}_1^0}; m_{\tilde{G}} = 1 \text{ GeV}$$



**CMS Preliminary**  $77.5 \text{ fb}^{-1}$  (13 TeV)

$$pp \rightarrow \tilde{\chi}_i^{0,\pm} \tilde{\chi}_j^{0,\pm} \rightarrow \tilde{\chi}_1^0 \tilde{\chi}_1^0 + X_{\text{soft}}; \tilde{\chi}_1^0 \rightarrow H \tilde{G} \text{ (100\%)}$$

$$m_{\tilde{\chi}_2^0} \approx m_{\tilde{\chi}_1^\pm} \approx m_{\tilde{\chi}_1^0}; m_{\tilde{G}} = 1 \text{ GeV}$$

