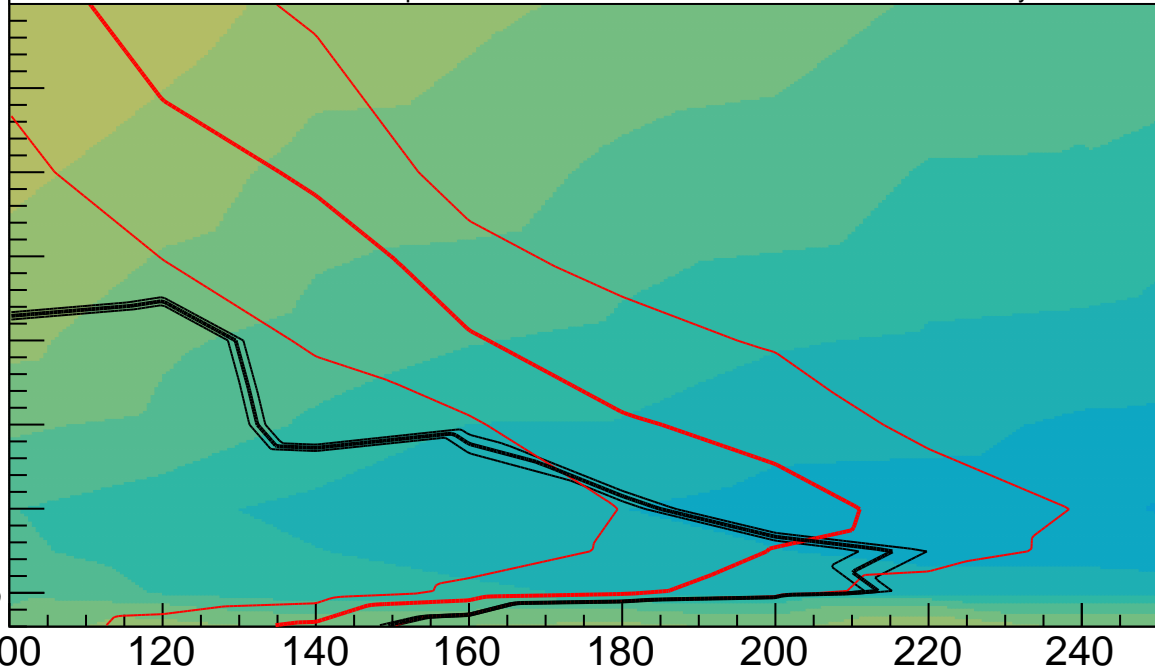
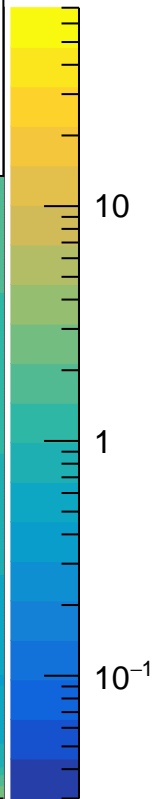


$\Delta m(\tilde{\chi}_2^0, \tilde{\chi}_1^0)$  [GeV]

50  
45  
40  
35  
30  
25  
20  
15  
10  
5  
100 120 140 160 180 200 220 240

Median expected upper limit on cross section at 95% CL  
 $pp \rightarrow \tilde{\chi}_1^+ \tilde{\chi}_2^0, \tilde{\chi}_2^0 \tilde{\chi}_2^0, m_{\tilde{\chi}_1^\pm} = (m_{\tilde{\chi}_2^0} + m_{\tilde{\chi}_1^0})/2, m_{\tilde{\chi}_2^0} \times m_{\tilde{\chi}_1^0} < 0, \text{NLO-NLL excl.}$   
 = Expected  $\pm 1 \sigma_{\text{experiment}}$       = Observed  $\pm 1 \sigma_{\text{theory}}$



$m_{\tilde{\chi}_2^0}$  [GeV]