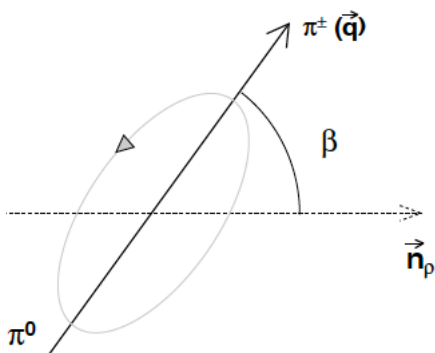
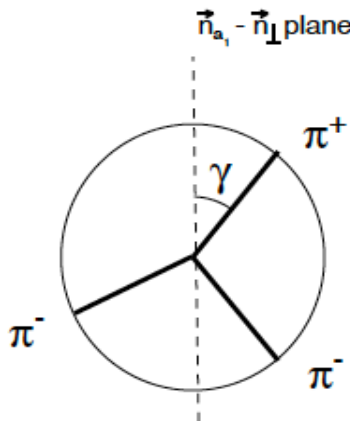


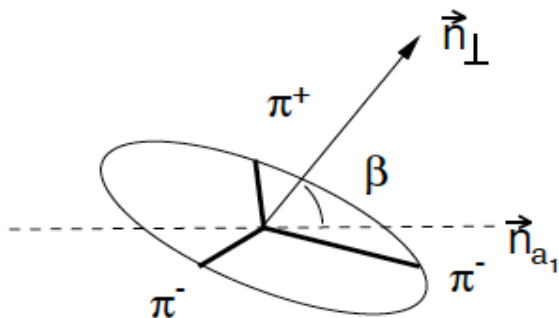
$a: \alpha(\tau \rightarrow \rho, a_1)$



$b: \beta(\rho \rightarrow \pi^\pm \pi^0)$



$c: \gamma(a_1 \rightarrow \pi^+ \pi^- \pi^0)$



$d: \beta(a_1 \rightarrow \pi^+ \pi^- \pi^0)$