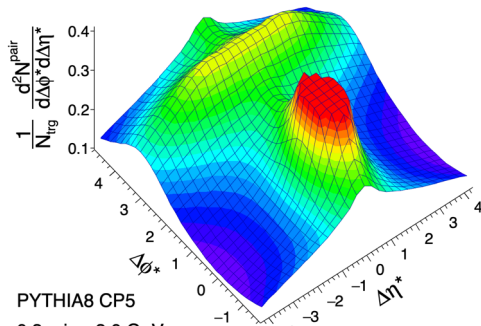


**MCSM Simulation Preliminary**Anti- $k_T$  R=0.8

$$\langle N_{ch}^j \rangle = 28$$

$$p_T^{\text{jet}} > 550$$

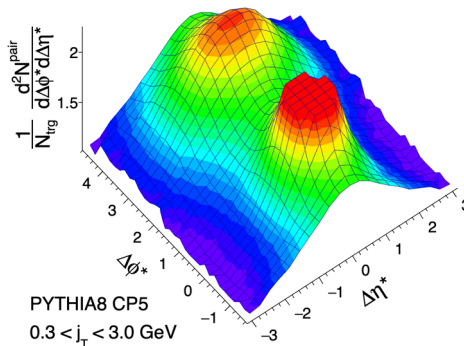
$$|\eta^{\text{jet}}| < 1.6$$

**MCSM Simulation Preliminary**Anti- $k_T$  R=0.8

$$\langle N_{ch}^j \rangle = 100$$

$$p_T^{\text{jet}} > 550$$

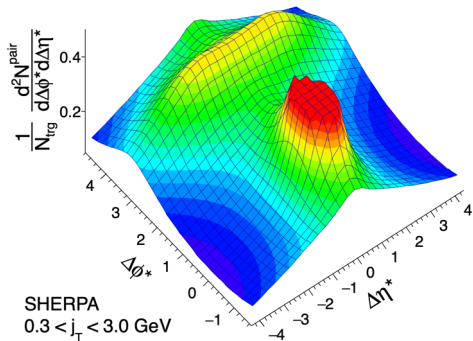
$$|\eta^{\text{jet}}| < 1.6$$

**MCSM Simulation Preliminary**Anti- $k_T$  R=0.8

$$\langle N_{ch}^j \rangle = 31$$

$$p_T^{\text{jet}} > 550$$

$$|\eta^{\text{jet}}| < 1.6$$

**MCSM Simulation Preliminary**Anti- $k_T$  R=0.8

$$\langle N_{ch}^j \rangle = 98$$

$$p_T^{\text{jet}} > 550$$

$$|\eta^{\text{jet}}| < 1.6$$

