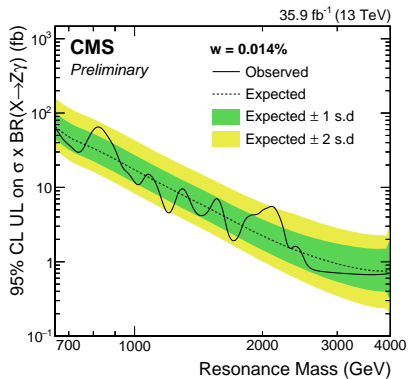
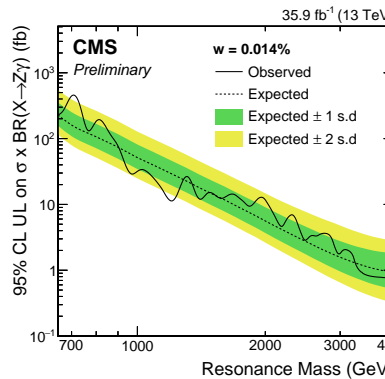


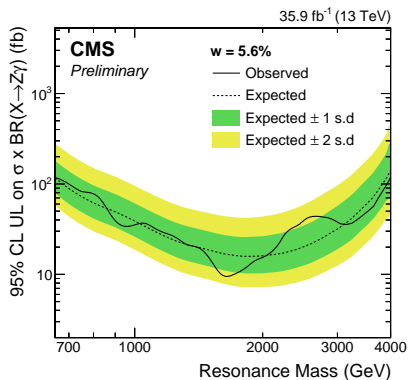
(a) $\frac{\Gamma}{m} = 0.014\%$: b-tagged



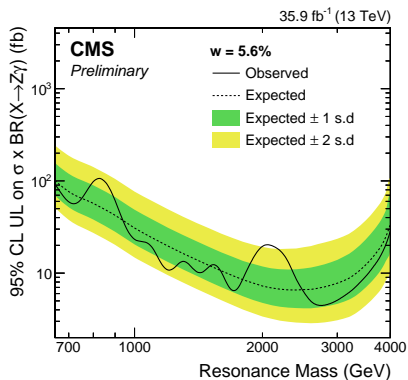
(b) $\frac{\Gamma}{m} = 0.014\%$: tau21



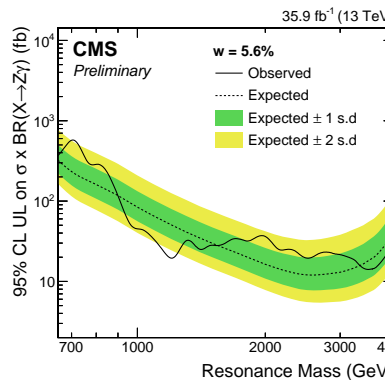
(c) $\frac{\Gamma}{m} = 0.014\%$: anti-tau21



(d) $\frac{\Gamma}{m} = 5.6\%$: b-tagged



(e) $\frac{\Gamma}{m} = 5.6\%$: tau21



(f) $\frac{\Gamma}{m} = 5.6\%$: anti-tau21