

35.9 fb⁻¹ (13 TeV)

CMS

Preliminary

w = 0.014%

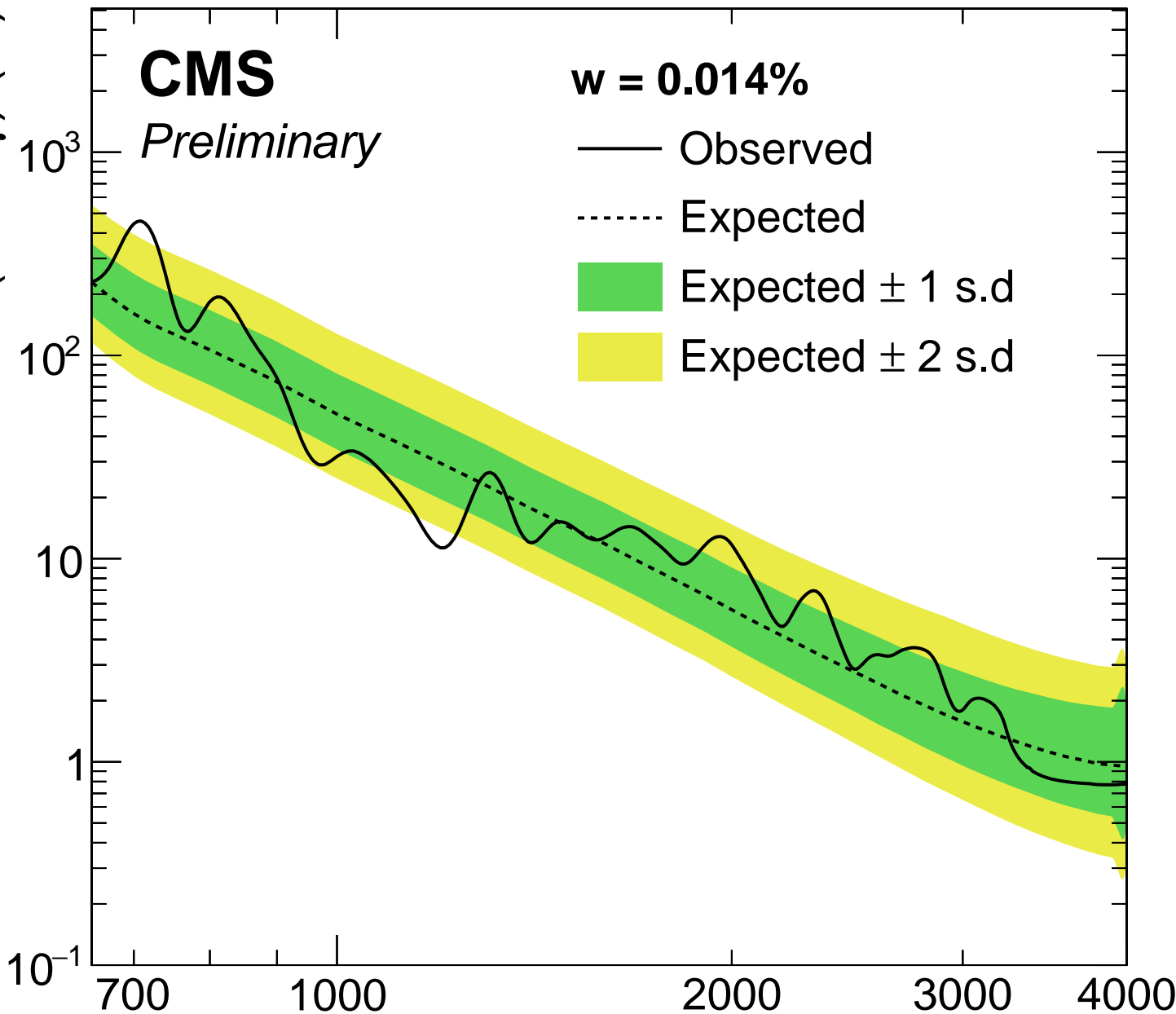
— Observed

⋯ Expected

Expected ± 1 s.d

Expected ± 2 s.d

95% CL UL on $\sigma \times \text{BR}(X \rightarrow Z\gamma)$ (fb)



Resonance Mass (GeV)