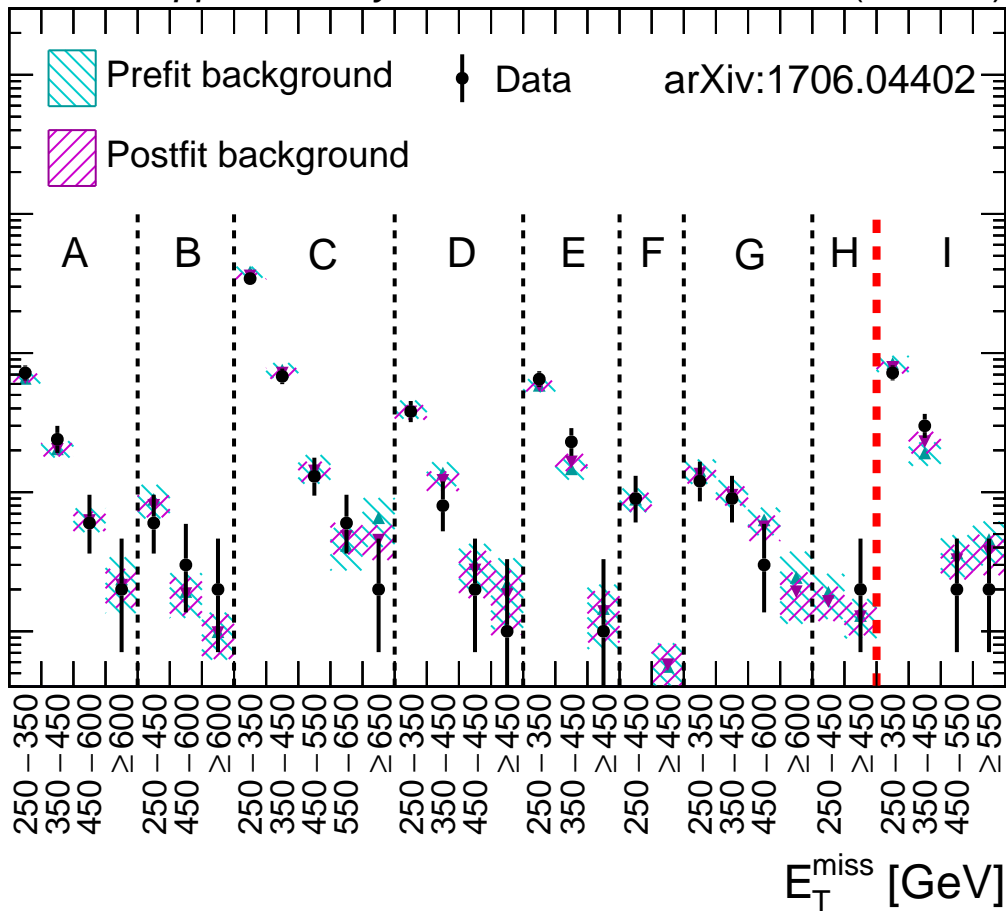


Events



A: $N_J \leq 3, t_{\text{mod}} > 10,$

$M_{/b} \leq 175$ GeV

B: $N_J \leq 3, t_{\text{mod}} > 10,$

$M_{/b} > 175$ GeV

C: $N_J \geq 4, t_{\text{mod}} \leq 0,$

$M_{/b} \leq 175$ GeV

D: $N_J \geq 4, t_{\text{mod}} \leq 0,$

$M_{/b} > 175$ GeV

E: $N_J \geq 4, 0 < t_{\text{mod}} \leq 10,$

$M_{/b} \leq 175$ GeV

F: $N_J \geq 4, 0 < t_{\text{mod}} \leq 10,$

$M_{/b} > 175$ GeV

G: $N_J \geq 4, t_{\text{mod}} > 10,$

$M_{/b} \leq 175$ GeV

H: $N_J \geq 4, t_{\text{mod}} > 10,$

$M_{/b} > 175$ GeV

I: Compressed region