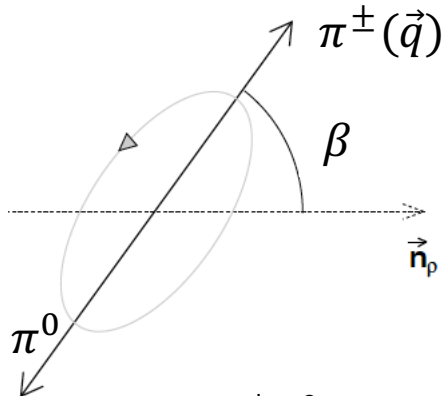
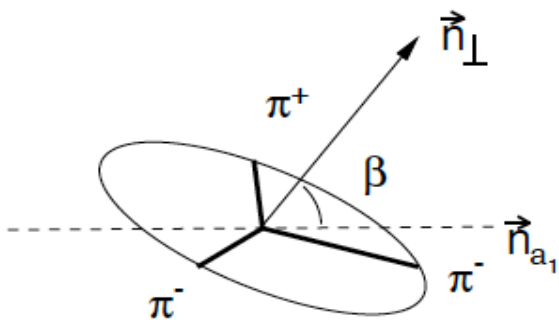


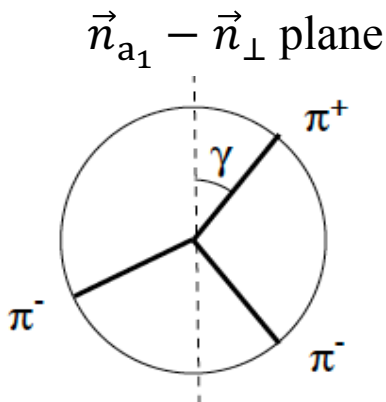
(a) $\alpha(\tau \rightarrow \nu_\tau + \rho, a_1)$



(b) $\beta(\rho \rightarrow \pi^\pm \pi^0)$



(c) $\beta(a_1 \rightarrow \pi^- \pi^+ \pi^-)$



(d) $\gamma(a_1 \rightarrow \pi^- \pi^+ \pi^-)$