

Entries / 0.04

CMS

$\sqrt{s} = 8\text{TeV}, L = 18.9\text{ fb}^{-1}$

$W(\mu\nu)H(b\bar{b})$

High $p_T(V)$

● Data

■ VH

■ W + $b\bar{b}$

■ W + b

■ W+udscg

■ Z + $b\bar{b}$

■ Z + b

■ Z+udscg

■ $t\bar{t}$

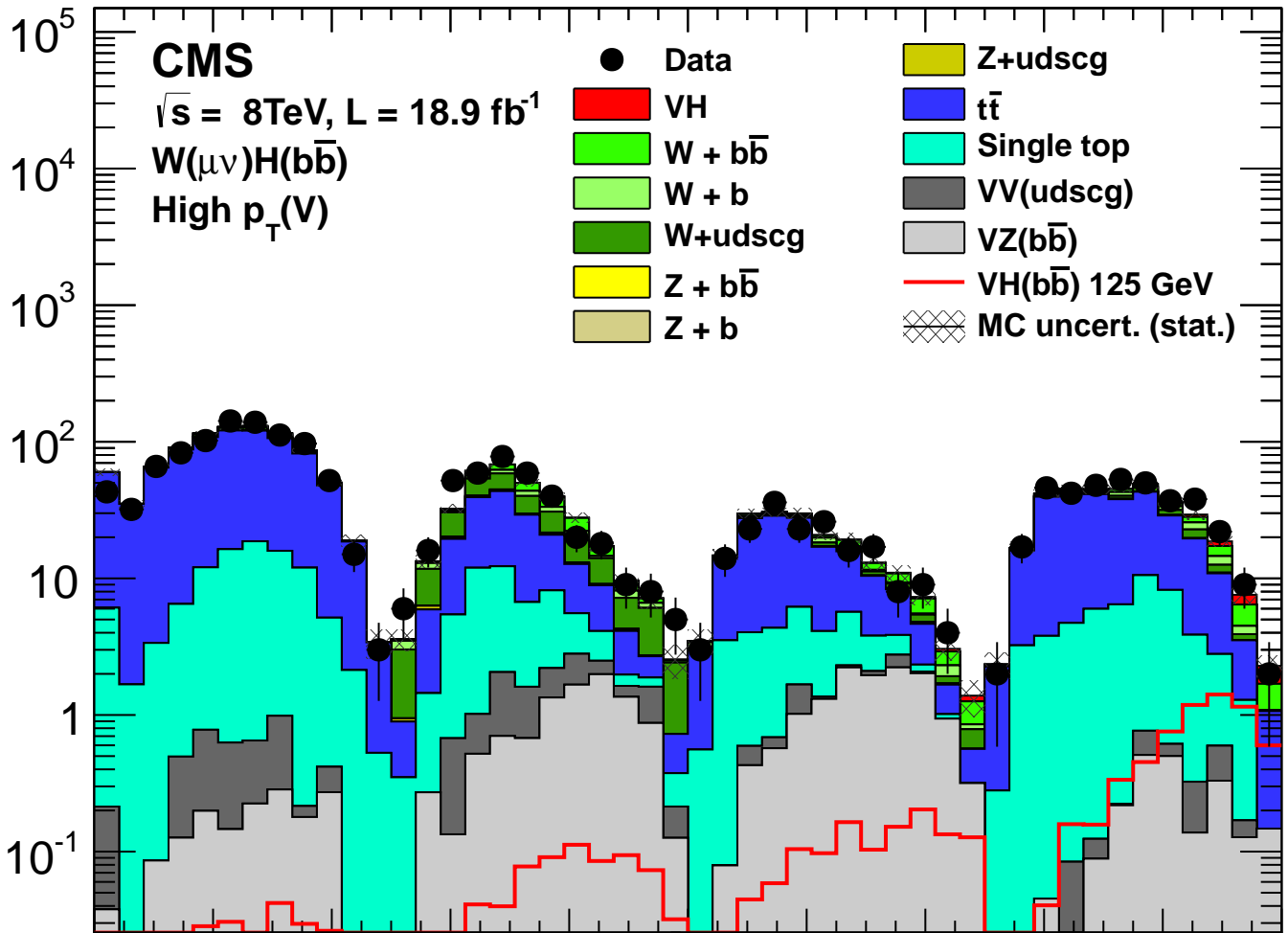
■ Single top

■ VV(udscg)

■ VZ($b\bar{b}$)

— VH($b\bar{b}$) 125 GeV

▨ MC uncert. (stat.)



$\chi^2/dof = 0.85$

▨ MC uncert. (stat. + syst.)

▨ MC uncert. (stat.)

Data/MC

-1 -0.8 -0.6 -0.4 -0.2 0 0.2 0.4 0.6 0.8 1

BDT output